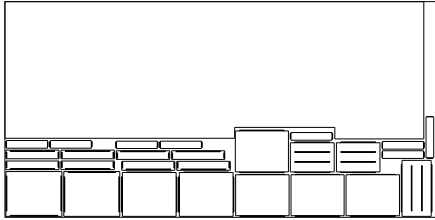
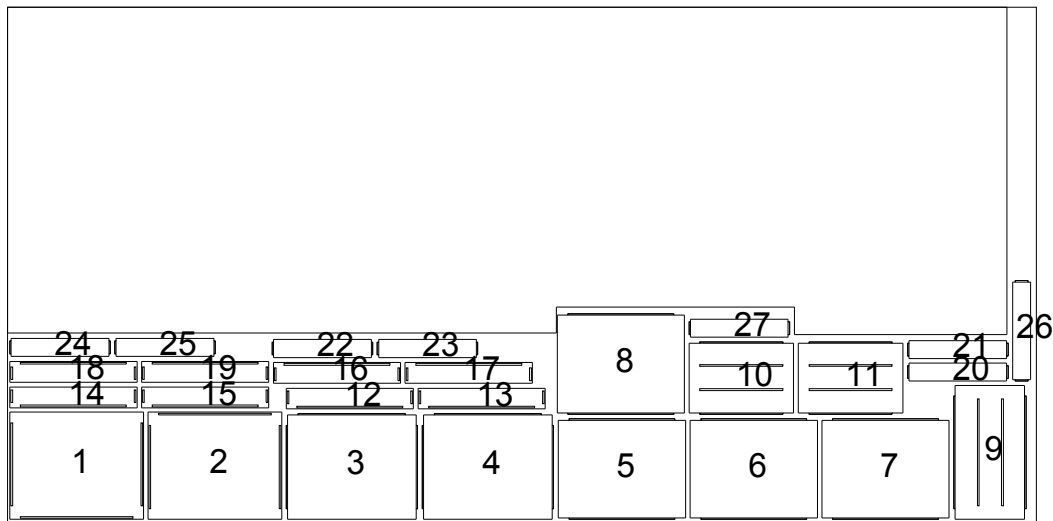


Job Name : mini drw cab  
Material : 1/4 CP  
Number of Sheets : 1

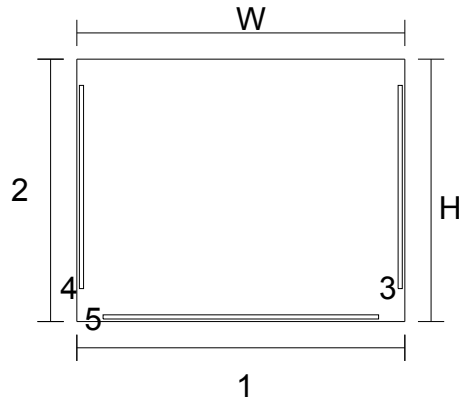
Yield : 31.64%  
Rolling Nest Yield : 91.48%  
Rolling Nest Savings : \$23.94





Sheet 1 (Material : 1/4 CP)

No.	Cabinet	Cab #	Part	Width	Height
1	Patrick Mini-MOD1	B2	Deck	12.5"	10"
2	Patrick Mini-MOD1	B2	Top	12.5"	10"
3	Patrick Mini-MOD1	B2	Fixed Shelf	12.25"	9.875"
4	Patrick Mini-MOD1	B2	Fixed Shelf	12.25"	9.875"
5	drw box-MOD1	B1	Back	11.875"	9.375"
6	drw box-MOD1	B1	Back	11.875"	9.375"
7	drw box-MOD1	B1	Back	11.875"	9.375"
8	drw box-MOD1	B1	Back	11.875"	9.375"
9	Patrick Mini-MOD1	B2	Back	6.75"	12.5"
10	Patrick Mini-MOD1	B2	Left End	9.75"	6.75"
11	Patrick Mini-MOD1	B2	Right End	9.75"	6.75"
12	drw box-MOD1	B1	Deck	11.875"	1.9375"
13	drw box-MOD1	B1	Deck	11.875"	1.9375"
14	drw box-MOD1	B1	Deck	11.875"	1.9375"
15	drw box-MOD1	B1	Deck	11.875"	1.9375"
16	drw box-MOD1	B1	Top	11.875"	1.9375"
17	drw box-MOD1	B1	Top	11.875"	1.9375"
18	drw box-MOD1	B1	Top	11.875"	1.9375"
19	drw box-MOD1	B1	Top	11.875"	1.9375"
20	drw box-MOD1	B1	Left End	9.375"	1.6875"
21	drw box-MOD1	B1	Left End	9.375"	1.6875"
22	drw box-MOD1	B1	Left End	9.375"	1.6875"
23	drw box-MOD1	B1	Left End	9.375"	1.6875"
24	drw box-MOD1	B1	Right End	9.375"	1.6875"
25	drw box-MOD1	B1	Right End	9.375"	1.6875"
26	drw box-MOD1	B1	Right End	1.6875"	9.375"
27	drw box-MOD1	B1	Right End	9.375"	1.6875"

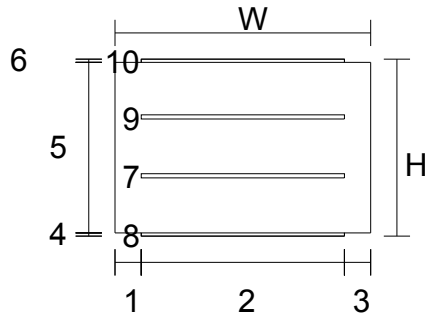


Quantity Required = 1 (Material : 1/4 CP)

CabinetName	Cab #	PartType	Sheet#	SheetPart#
Patrick Mini-MODB2		Deck	1	1

No.	Dimension
W	12.5"
H	10"
1	12.5"
2	10"

No.	Side	From Left	From Bottom	Width	Height	Depth
3	Front	12.245"	1.25"	0.16"	7.75"	0.135"
4	Front	0.095"	1.25"	0.16"	7.75"	0.135"
5	Front	1"	0.095"	10.5"	0.16"	0.135"

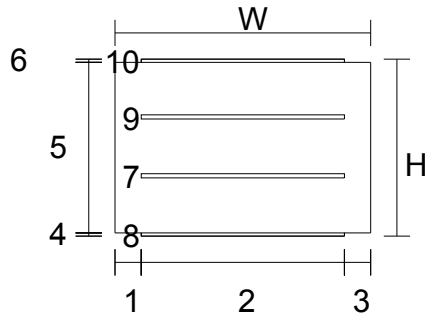


Quantity Required = 1 (Material : 1/4 CP)

CabinetName	Cab #	PartType	Sheet#	SheetPart#
Patrick Mini-MODB2		Left End	1	10

No.	Dimension
W	9.75"
H	6.75"
1	1"
2	7.75"
3	1"
4	0.125"
5	6.5"
6	0.125"

No.	Side	From Left	From Bottom	Width	Height	Depth
7	Front	1"	2.22"	7.75"	0.16"	0.135"
8	Back	1"	-0"	7.75"	0.1251"	0.1"
9	Front	1"	4.47"	7.75"	0.16"	0.135"
10	Back	1"	6.6249"	7.75"	0.1251"	0.1"

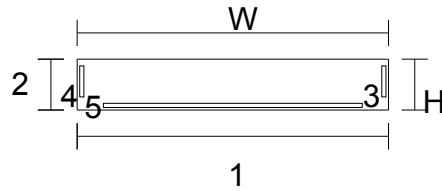


Quantity Required = 1 (Material : 1/4 CP)

CabinetName	Cab #	PartType	Sheet#	SheetPart#
Patrick Mini-MODB2		Left End	1	11

No.	Dimension
W	9.75"
H	6.75"
1	1"
2	7.75"
3	1"
4	0.125"
5	6.5"
6	0.125"

No.	Side	From Left	From Bottom	Width	Height	Depth
7	Front	1"	2.22"	7.75"	0.16"	0.135"
8	Back	1"	-0"	7.75"	0.1251"	0.1"
9	Front	1"	4.47"	7.75"	0.16"	0.135"
10	Back	1"	6.6249"	7.75"	0.1251"	0.1"

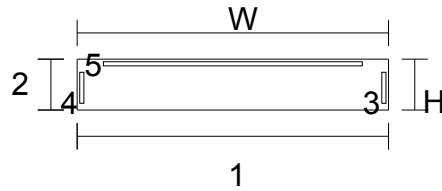


Quantity Required = 4 (Material : 1/4 CP)

CabinetName	Cab #	PartType	Sheet#	SheetPart#
drw box-MOD1	B1	Deck	1	12

No.	Dimension
W	11.875"
H	1.9375"
1	11.875"
2	1.9375"

No.	Side	From Left	From Bottom	Width	Height	Depth
3	Front	11.62"	0.5"	0.16"	1.1875"	0.135"
4	Front	0.095"	0.5"	0.16"	1.1875"	0.135"
5	Front	1"	0.095"	9.875"	0.16"	0.135"

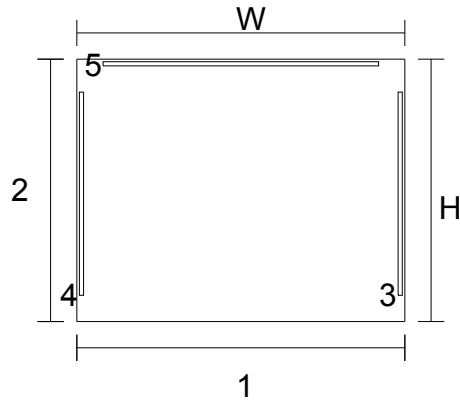


Quantity Required = 4 (Material : 1/4 CP)

CabinetName	Cab #	PartType	Sheet#	SheetPart#
drw box-MOD1	B1	Top	1	16

No.	Dimension
W	11.875"
H	1.9375"
1	11.875"
2	1.9375"

No.	Side	From Left	From Bottom	Width	Height	Depth
3	Front	11.62"	0.25"	0.16"	1.1875"	0.135"
4	Front	0.095"	0.25"	0.16"	1.1875"	0.135"
5	Front	1"	1.6825"	9.875"	0.16"	0.135"

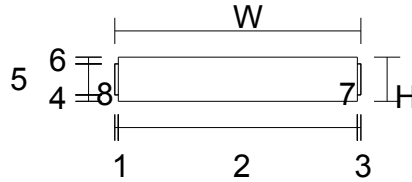


Quantity Required = 1 (Material : 1/4 CP)

CabinetName	Cab #	PartType	Sheet#	SheetPart#
Patrick Mini-MODB2		Top	1	2

No.	Dimension
W	12.5"
H	10"
1	12.5"
2	10"

No.	Side	From Left	From Bottom	Width	Height	Depth
3	Front	12.245"	1"	0.16"	7.75"	0.135"
4	Front	0.095"	1"	0.16"	7.75"	0.135"
5	Front	1"	9.745"	10.5"	0.16"	0.135"

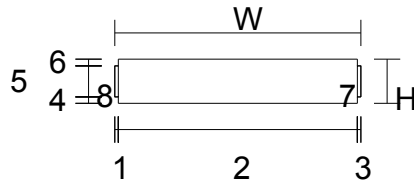


Quantity Required = 4 (Material : 1/4 CP)

CabinetName	Cab #	PartType	Sheet#	SheetPart#
drw box-MOD1	B1	Left End	1	20

No.	Dimension
W	9.375"
H	1.6875"
1	0.125"
2	9.125"
3	0.125"
4	0.25"
5	1.1875"
6	0.25"

No.	Side	From Left	From Bottom	Width	Height	Depth
7	Front	9.25"	0.25"	0.1251"	1.1875"	0.1"
8	Front	-0"	0.25"	0.1251"	1.1875"	0.1"

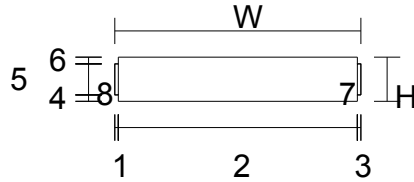


Quantity Required = 4 (Material : 1/4 CP)

CabinetName	Cab #	PartType	Sheet#	SheetPart#
drw box-MOD1	B1	Left End	1	24

No.	Dimension
W	9.375"
H	1.6875"
1	0.125"
2	9.125"
3	0.125"
4	0.25"
5	1.1875"
6	0.25"

No.	Side	From Left	From Bottom	Width	Height	Depth
7	Front	9.2499"	0.25"	0.1251"	1.1875"	0.1"
8	Front	-0.0001"	0.25"	0.1251"	1.1875"	0.1"

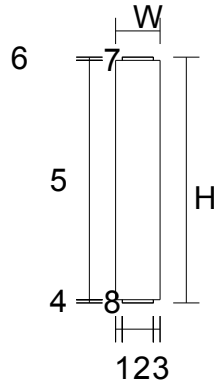


Quantity Required = 4 (Material : 1/4 CP)

CabinetName	Cab #	PartType	Sheet#	SheetPart#
drw box-MOD1	B1	Left End	1	25

No.	Dimension
W	9.375"
H	1.6875"
1	0.125"
2	9.125"
3	0.125"
4	0.25"
5	1.1875"
6	0.25"

No.	Side	From Left	From Bottom	Width	Height	Depth
7	Front	9.25"	0.25"	0.1251"	1.1875"	0.1"
8	Front	-0"	0.25"	0.1251"	1.1875"	0.1"

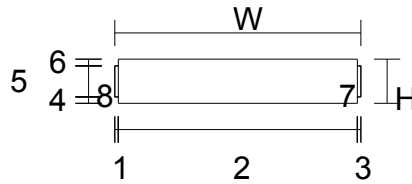


Quantity Required = 4 (Material : 1/4 CP)

CabinetName	Cab #	PartType	Sheet#	SheetPart#
drw box-MOD1	B1	Left End	1	26

No.	Dimension
W	1.6875"
H	9.375"
1	0.25"
2	1.1875"
3	0.25"
4	0.125"
5	9.125"
6	0.125"

No.	Side	From Left	From Bottom	Width	Height	Depth
7	Front	0.25"	9.2499"	1.1875"	0.1251"	0.1"
8	Front	0.25"	-0.0001"	1.1875"	0.1251"	0.1"

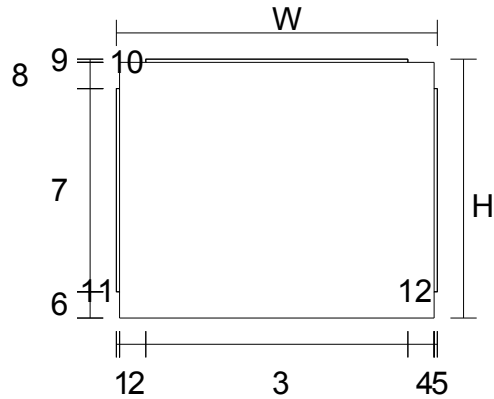


Quantity Required = 4 (Material : 1/4 CP)

CabinetName	Cab #	PartType	Sheet#	SheetPart#
drw box-MOD1	B1	Left End	1	27

No.	Dimension
W	9.375"
H	1.6875"
1	0.125"
2	9.125"
3	0.125"
4	0.25"
5	1.1875"
6	0.25"

No.	Side	From Left	From Bottom	Width	Height	Depth
7	Front	9.25"	0.25"	0.1251"	1.1875"	0.1"
8	Front	-0"	0.25"	0.1251"	1.1875"	0.1"

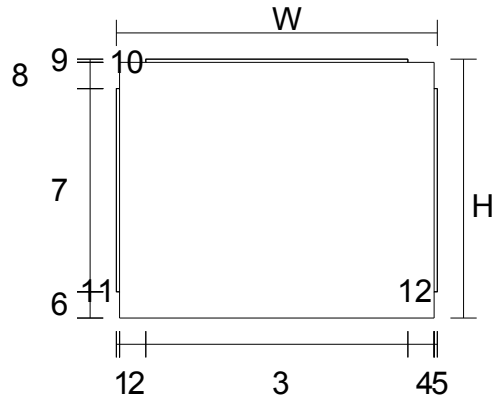


Quantity Required = 1 (Material : 1/4 CP)

CabinetName	Cab #	PartType	Sheet#	SheetPart#
Patrick Mini-MODB2		Fixed Shelf	1	3

No.	Dimension
W	12.25"
H	9.875"
1	0.125"
2	1"
3	10"
4	1"
5	0.125"
6	1"
7	7.75"
8	1"
9	0.125"

No.	Side	From Left	From Bottom	Width	Height	Depth
10	Front	1.125"	9.7499"	10"	0.1251"	0.1"
11	Front	-0.0001"	1"	0.1251"	7.75"	0.1"
12	Front	12.1249"	1"	0.1251"	7.75"	0.1"

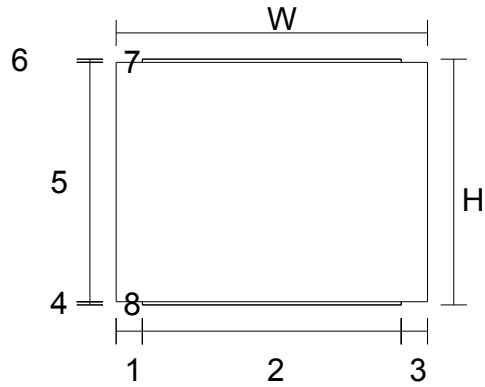


Quantity Required = 1 (Material : 1/4 CP)

CabinetName	Cab #	PartType	Sheet#	SheetPart#
Patrick Mini-MODB2		Fixed Shelf	1	4

No.	Dimension
W	12.25"
H	9.875"
1	0.125"
2	1"
3	10"
4	1"
5	0.125"
6	1"
7	7.75"
8	1"
9	0.125"

No.	Side	From Left	From Bottom	Width	Height	Depth
10	Front	1.125"	9.7499"	10"	0.1251"	0.1"
11	Front	-0.0001"	1"	0.1251"	7.75"	0.1"
12	Front	12.1249"	1"	0.1251"	7.75"	0.1"

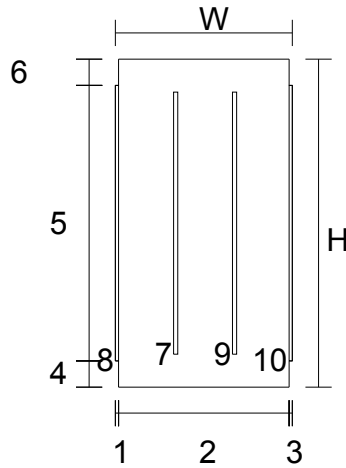


Quantity Required = 4 (Material : 1/4 CP)

CabinetName	Cab #	PartType	Sheet#	SheetPart#
drw box-MOD1	B1	Back	1	5

No.	Dimension
W	11.875"
H	9.375"
1	1"
2	9.875"
3	1"
4	0.125"
5	9.125"
6	0.125"

No.	Side	From Left	From Bottom	Width	Height	Depth
7	Front	1"	9.2499"	9.875"	0.1251"	0.1"
8	Front	1"	-0.0001"	9.875"	0.1251"	0.1"



Quantity Required = 1 (Material : 1/4 CP)

CabinetName	Cab #	PartType	Sheet#	SheetPart#
Patrick Mini-MODB2		Back	1	9

No.	Dimension
W	6.75"
H	12.5"
1	0.125"
2	6.5"
3	0.125"
4	1"
5	10.5"
6	1"

No.	Side	From Left	From Bottom	Width	Height	Depth
7	Front	2.22"	1.25"	0.16"	10"	0.135"
8	Back	-0.0001"	1"	0.1251"	10.5"	0.1"
9	Front	4.47"	1.25"	0.16"	10"	0.135"
10	Back	6.6249"	1"	0.1251"	10.5"	0.1"