

# THERMWOOD



The Thermwood QCore SuperControl is a feature rich, high performance CNC control system. Thermwood, the only major CNC router manufacturer that designs and builds its own CNC control, is a leader in implementing advanced control technology. As a result, Thermwood has been granted more patents on CNC router technology than all other CNC router manufactures in the world, combined.

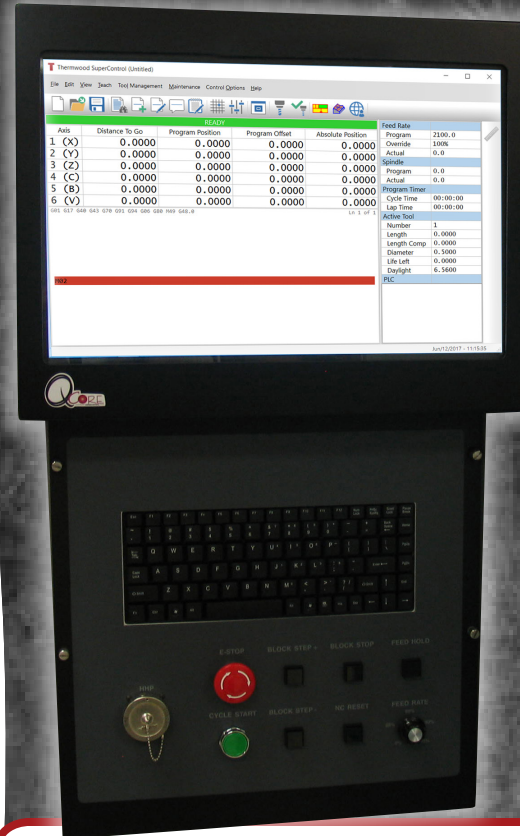
This control is designed from its very core to operate a CNC router with higher efficiency and productivity. The multi-tasking control utilizes a Quad Core, 3.3 Ghz Processor, 1 TB hard drive and features a high level of hardware integration, extensive use of reliable surface mount technology and a built in upgrade path for future technology.

Thermwood's QCore SuperControl incorporates more advanced control features than any other CNC control in the industry.

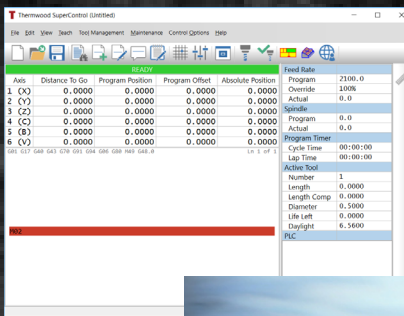
And, because Thermwood provides all the technology, you have single source responsibility. Thermwood stands behind and supports the entire system and when new technology is available it can easily be upgraded.



Optional Hand Held Programming Unit.



- Full Multi-tasking Control- the ability to operate the machine in the background while doing other tasks on the control
- Huge File storage- 1 TB hard drive for storage and greater file execution with no delays.
- New Hand Held Programmer- Rugged design
- Better, More Accurate Motion- Complex motion calculations and faster speeds
- Full 5 Axis Simultaneous Motion
- Direct Link- accepts raw design files or CNC programs, compatible with virtually all design software, and the ability to nest hundreds of parts from different sources and programs
- Virtual Service- direct, live, visual contact from the control to Thermwood's Service Department.



The QCore SuperControl is equipped with a 19" full color LCD flat screen monitor and 1 TB hard drive. With the huge program storage capacity, programs can be stored and executed with no delays. Complex CAD generated programs can be executed at high speed without stopping.

The control uses a Microsoft® Windows® 10 Professional operating system, offering the operator choices for program and machine operation display, pop-up windows for event and information display, pop-up windows for data input, and the ability to operate the machine in the background while doing other tasks on the control. The QCore SuperControl can also create programs directly at the machine with a newly designed Hand Held Programmer.

## New Hand Held Programmer Features

- Rugged ABS case with rubberized sure grip sides.
- Durable 24-key steel-dome membrane keypad.
- Direct feed rate override % control.
- Zero feed rate % button.
- Power feed positioning at current feed rate until button is released.
- Pulse/move an axis at a set increment for fine positioning.
- Power pulse an axis for fine positioning until button is released.
- Part program lines/blocks displayed. Scroll through part program lines/blocks to view any line.
- Current feed rate is always displayed on teach screens.
- Current pulse increment is always displayed during line/motion teach.
- Add lines/blocks of code.
- Feed hold capability for controlled halting of runtime execution.



The Thermwood Hand Held Programmer is the single most powerful tool available for creating, modifying, editing and refining CNC programs at the machine. The Hand Held Programmer provides a vital link between the CAD/CAM programmer and the CNC machine tool.

# THERMWOOD

[www.thermwood.com](http://www.thermwood.com)

800-533-6901, P.O. Box 436, Dale, IN 47523